



AGROPOLE®

**Together Let's Build
Tomorrow's Sustainable
Food Solutions**

 WWW.AGROPOLE.CH



Heritage Serving Tomorrow

OUR LEGACY

The Agropôle was built on a legacy of family lands, farmed since 1600 in the village of Molondin, in Switzerland's countryside. This heritage has been the foundation of the cluster's ethics and values, allowing us to build our sustainable future.

FIELDS FOR TRIALS

This experience of land and the know-how of those who cultivate it are major assets to help the sustainable development of the current players. Indeed, in order to implement the sustainable food solutions of tomorrow, professionals from the field to the consumer's plate must work together. With this aim, the Agropôle, its land and its knowledge enable the creation of a vibrant, field-oriented ecosystem that benefits everyone's development. It becomes a replicable model showing its strength and its impact.



« Developing a more sustainable future is a dream we all share. I found it my duty to use the family estate and the land as a catalyst to promote and help develop a more sustainable future »

Stéphane Fankhauser, Founder of Agropôle

An Impactful Community

FOOD, HEALTH, CLIMATE

The Covid-19 virus crisis has revealed the key importance of the agro-food sector. Sustainability, short supply chains, healthy produce: The players in the sector should accelerate the implementation of responsible and sustainable models together.

NEEDS & SOLUTIONS

More than being the cause of all ills, the sector makes it possible to act. Climate-healthy soils, better traceability, local and healthy food: To do this, we must help, through our know-how, the implementation of sustainable innovative solutions.

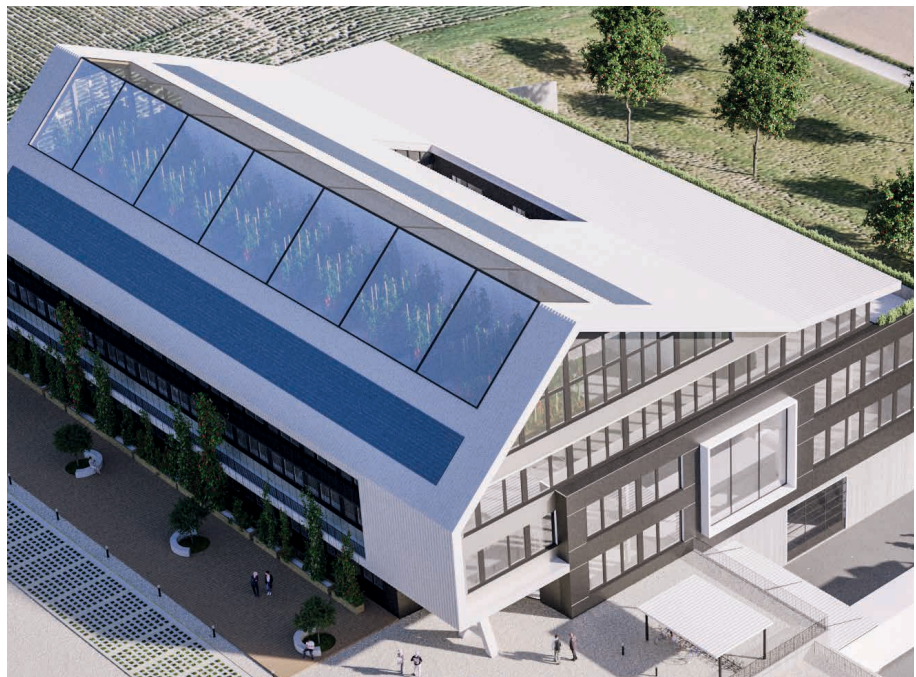
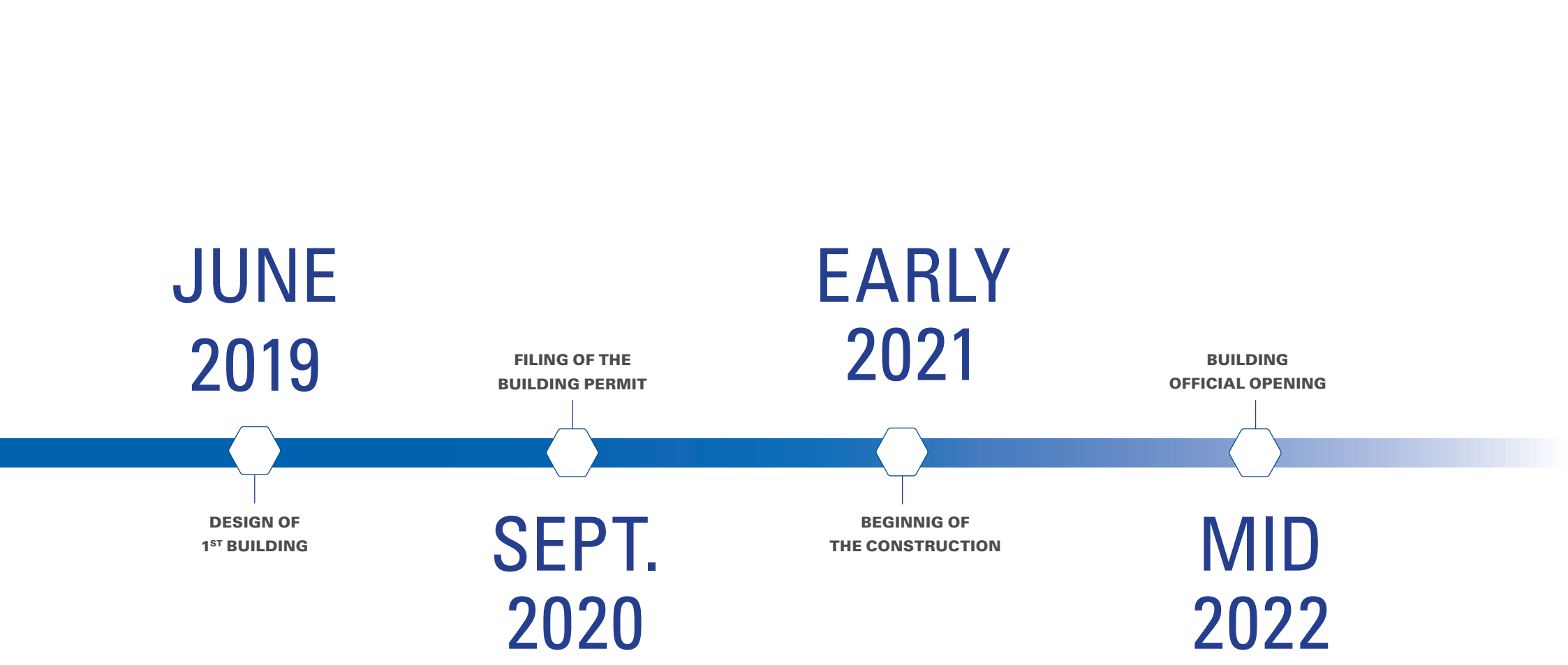
SUSTAINABLE INNOVATIONS AT THE HEART OF WHAT WE DO

With this aim, the Agropôle concept is to bring together producers, manufacturers, service providers and innovators to one unique site, in order to accelerate the marketing of the sustainable food solutions of tomorrow. It creates a stimulating ecosystem with a major impact.





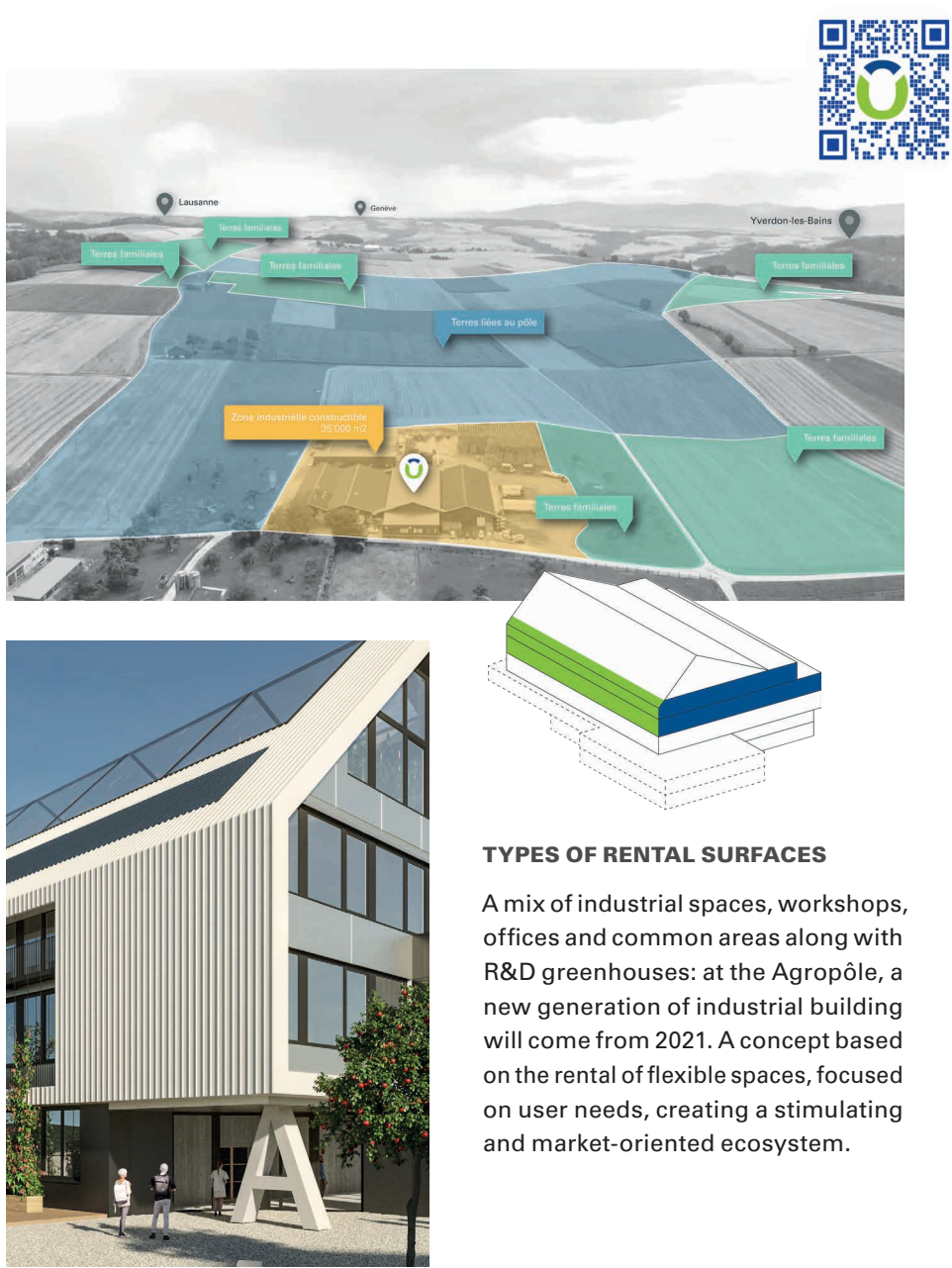
**Future
Developments**



High-tech Building and Lands for Trials

The Agropôle has lands for trials and a huge commercial network. In addition, a new building will come into being in 2021. Conceived as a real high-tech, fully digitalized and circular economy demonstrator, it will benefit all the tenants and partners.

In due time, five buildings will be constructed accommodating a variety of industrial, service provider and innovative tenants. A mix of users to develop a stimulating agri-food ecosystem, to benefit everyone's development.



TYPES OF RENTAL SURFACES

A mix of industrial spaces, workshops, offices and common areas along with R&D greenhouses: at the Agropôle, a new generation of industrial building will come from 2021. A concept based on the rental of flexible spaces, focused on user needs, creating a stimulating and market-oriented ecosystem.

From Switzerland To the International

Between the years 2000 and 2050, more food will have been produced since the beginning of humanity. This figure is so difficult to imagine that it propels the agro-food sector into the heart of global discussions. At center of the Swiss Food & Nutrition Valley, composed of major players, Agropôle is a unique site and its concept has a wide range of opportunities that must not be missed.

SWITZERLAND HAS A MAJOR ROLE TO PLAY WITH ITS WEALTH OF ACADEMIC, INSTITUTIONAL AND PRIVATE KNOWLEDGE AS WELL AS BEING A NOTORIOUS FORCE REGARDING INNOVATION ON THE WORLD STAGE.









SUPPORT AND NETWORKS



COMPANIES ON SITE



DESIGNED BY GREENCOM

-  10' from the A1 motorway and 35' from Lausanne
-  15' from Payerne Airport
-  1 hour from Geneva Cointrin Airport
-  2 hours from Zurich Airport
-  20' from Yverdon-les-Bains train station
-  Nearby: Vuissens golf course, Yvonand beaches





Let's Act for Tomorrow.

Official collaborator of Bertrand Piccard's Solar Impulse Foundation, the Agropôle offers the latest-generation industrial infrastructure. A building developed by Losinger-Marazzi and chosen as a global circular economy demonstrator by Bouygues Construction world wide.

- Member of-

WORLD ALLIANCE
for EFFICIENT SOLUTIONS

by SOLARIMPULSE
FOUNDATION

PARTENAIRE

**LOSINGER
MARAZZI**

DÉMONSTRATEUR

BOUYGUES
CONSTRUCTION



AGROPÔLE
Alain Schacher, CEO
1415 Molondin CH
+41 24 524 99 99
hello@agropole.ch

